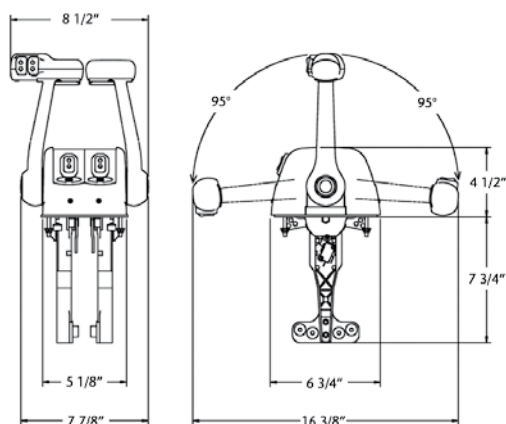


CONTROLS

Teleflex® by **SEASTAR SOLUTIONS®**
MARINE

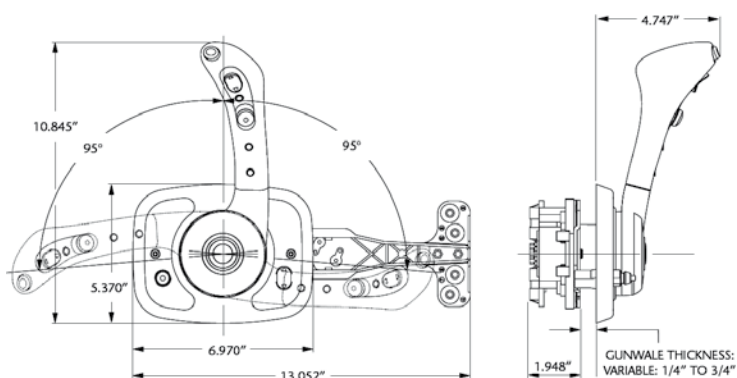
CH7800 TOP MOUNT CONTROL



Code	Description	Cover	Cover Insert	Handle	Top Choice
MM TFX CH7840	Base	Chrome	Chrome & Black included	Chrome	✓
MM TFX CH7841	Base with Trim	Chrome	Chrome & Black included	Chrome	✓
MM TFX CH7842	Base with Trim & Tilt	Chrome	Chrome & Black included	Chrome	✓

Teleflex® by **SEASTAR SOLUTIONS®**
MARINE

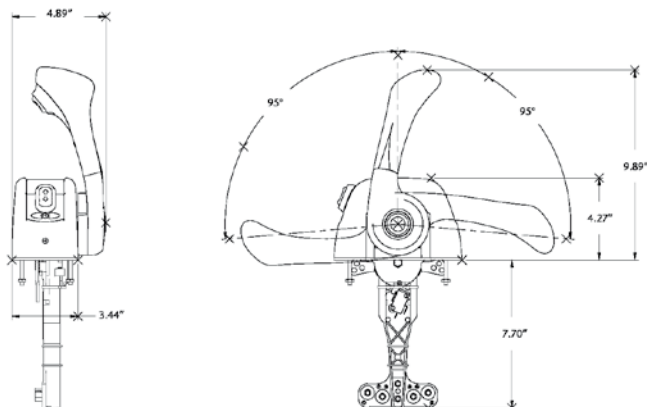
CH1700 SIDE MOUNT CONTROL



Code	Engine controls
MM TFX CH1750P	Side Mount, Chrome Handle, Black Cover, Chrome and Black Inserts, I/O and O/B stop switch
MM TFX CH1751P	Side Mount, Chrome Handle, Black Cover, Chrome and Black Inserts with trim, I/O and O/B stop switch
MM TFX CH1752P	Side Mount, Chrome Handle, Black Cover, Chrome and Black Inserts with trim & tilt, I/O and O/B stop switch



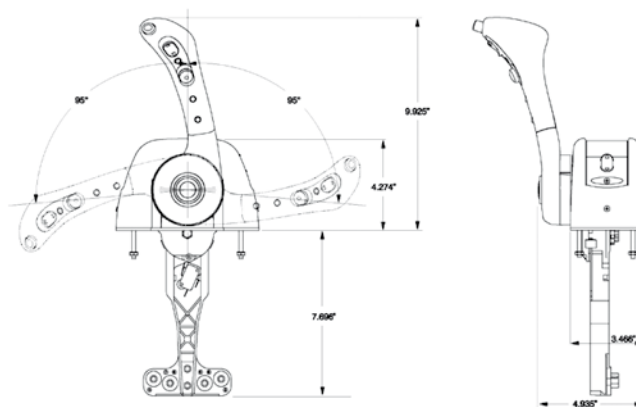
CH7500 TOP MOUNT CONTROL



Code	Engine controls
Single Top-Mount Control - Lever on the Right	
MM TFX CH7540P	Single Top-Mount, Chrome Handle, Chrome Cover, Chrome and Black Inserts
MM TFX CH7541P	Single Top-Mount, Chrome Handle, Chrome Cover, Chrome and Black Inserts, with Trim
MM TFX CH7542P	Single Top-Mount, Chrome Handle, Chrome Cover, Chrome and Black Inserts, with Trim & Tilt
Single Top-Mount Control with Neutral Interlock Lever on the Right Side	
MM TFX CH7550P	Single Top-Mount, Chrome Handle, Chrome Cover, Chrome and Black Inserts, with Neutral Interlock
MM TFX CH7551P	Single Top-Mount, Chrome Handle, Chrome Cover, Chrome and Black Inserts, with Trim, with Neutral Interlock
MM TFX CH7552P	Single Top-Mount, Chrome Handle, Chrome Cover, Chrome and Black Inserts, with Trim & Tilt, with Neutral Interlock



CH7600 TOP MOUNT CONTROL



Code	Engine controls
Single Top-Mount Control - Lever on the left	
MM TFX CH7640P	Single Top-Mount, Chrome Handle, Chrome Cover, Chrome and Black Inserts (without trim)
MM TFX CH7641P	Single Top-Mount, Chrome Handle, Chrome Cover, Chrome and Black Inserts, with Trim
MM TFX CH7642P	Single Top-Mount, Chrome Handle, Chrome Cover, Chrome and Black Inserts, with Trim & Tilt
Single Top-Mount Control with Neutral Interlock - Lever on the left	
MM TFX CH7650P	Single Top-Mount, Chrome Handle, Chrome Cover, Chrome and Black Inserts, with Neutral Interlock (without trim)
MM TFX CH7651P	Single Top-Mount, Chrome Handle, Chrome Cover, Chrome and Black Inserts, with Trim, with Neutral Interlock
MM TFX CH7652P	Single Top-Mount, Chrome Handle, Chrome Cover, Chrome and Black Inserts, with Trim & Tilt, with Neutral Interlock



SEASTAR HK6400A HYDRAULIC STEERING KIT



The kit contains the following:
 1- HH5271 SeaStar Helm 1.7 cu" (27.80cc)
 1- HC5345* SeaStar Pivot Cylinder
 2- HA5430 Hydraulic Oil (1 Liter)
 SeaStar kit includes hoses HK63xx

*Some engines may require alternative cylinders that require high precision steering.

Code: MM TFX HK6400A

SEASTAR PRO HK7400A HYDRAULIC STEERING KIT



The kit contains the following:
 1- HH5770 SeaStar Helm 2.0 cu" (32.77cc)
 1- HC5345* SeaStar Pivot Cylinder
 2- HA5430 Hydraulic Oil (1 Liter)
 SeaStar kit includes hoses HK73xx

*Some engines may require alternative cylinders that require high precision steering.

Code: MM TFX HK7400A

NFB™ 4.2 TILT SS157XX (SINGLE) ROTARY STEERING KIT



The kit contains the following:
 1- SH91526P No FeedBack Tilt Helm
 1- SH91800P Tilt Mechanism
 1- SSC62XX Steering Cable
 Hardware & Instruction sheets
 Kit sizes: 11-25 feet
 SSC61XX can be used as a replacement cable.

Code: MM TFX SS157XX

NFB™ 4.2 SS147XX (SINGLE) ROTARY STEERING KIT



The kit contains the following:
 1- SH4910P No FeedBack Helm
 1- SB27150P 90 Degree Bezel Kit
 1- SSC62XX Steering Cable
 Hardware & Instruction sheets
 Kit sizes: 10-20 feet (Single cable)
 SSC61XX can be used as a replacement cable.

Code: MM TFX SS147XX

NFB™ 4.2 SS148XX (DUAL) ROTARY STEERING KIT



The kit contains the following:
 1- SH4920P No FeedBack Helm
 1- SB27150P 90 Degree Bezel Kit
 2- SSC62XX Steering Cables
 Hardware & Instruction sheets
 Kit sizes: 12-16 feet
 SSC61XX can be used as replacement cables.

Code: MM TFX SS148XX

NFB™ SAFE-T II SS132XX ROTARY STEERING KIT



The kit contains the following:
 1- SH5150P No FeedBack Helm
 1- SB27150P 90 Degree Bezel Kit
 1- SSC62XX Steering Cable
 Hardware & Instruction sheets
 Kit sizes: 10-20 feet
 SSC61XX can be used as a replacement cable.

Code: MM TFX SS132XX



SAFE-T QC® SS137XX (SINGLE) ROTARY STEERING KIT



The kit contains the following:

- 1- SH5094P Helm
- 1- SB27484P 90 Degree Bezel Kit
- 1- SSC62XX Steering Cable
- Hardware & Instruction sheets
- Kit sizes: 8-23 feet
- SSC61XX can be used as a replacement cable.

Code: MM TFX SS137XX

NFB™ RACK SS151XX (SINGLE) RACK & PINION STEERING KIT



The kit contains the following:

- 1- SH5230P No FeedBackHelm
- 1- SB39544P 90 Degree Bezel Kit
- 1- SSC134XX Steering Cable
- Hardware & Instruction sheets
- Kit sizes: 10-20 feet (Single cable)
- SSC154XX can be used as a replacement cable (single cable systems only).
- SSC124XX old style rack cables CANNOT be used with these systems.

Code: MM TFX SS151XX

NFB™ PRO RACK SS152XX (DUAL) RACK & PINION STEERING KIT



The kit contains the following:

- 1- SH5230P No FeedBackHelm
- 1- SB39544P 90 Degree Bezel Kit
- 1- SSC135XX Dual Steering Cable
- Hardware & Instruction sheets
- Kit sizes: 12-16 feet (Dual cable)
- SSC124XX old style rack cables CANNOT be used with these systems.

Code: MM TFX SS152XX

BACK MOUNT RACK SS141XX RACK & PINION STEERING KIT



The kit contains the following:

- 1- SH5210P Helm
- 1- SB39526P 90 Degree Bezel Kit
- 1- SSC134XX Steering Cable
- Hardware & Instruction sheets
- Kit sizes: 8-23 feet (Single cable)
- SSC154XX can be used as a replacement cable (single cable systems only).
- SSC124XX old style rack cables CANNOT be used with these systems.

Code: MM TFX SS141XX

SEASTAR TILT STEERING KIT (CLASSIC) HK6400TC



The kit contains the following:

- 1- HH6541 SeaStar Tilt Helm, Classic, 1.7
- 1- HC5345 SeaStar Pivot Cylinder
- 2- HA5430 Hydraulic Oil (1 Liter)

Code: MM TFX HK6400TC

SEASTAR TILT STEERING KIT (SPORT) HK6400TS



The kit contains the following:

- 1- HH6191 SeaStar Tilt Helm, Sport, 1.7 Remote Fill
- 1- HC5345 SeaStar Pivot Cylinder
- 2- HA5430 Hydraulic Oil (1 Liter)

Code: MM TFX HK6400TS



SEASTAR YAMAHA STEERING KIT HK6500Y



The kit contains the following:

- 1- HH5271 SeaStar Helm 1.7
- 1- HC5358 Outboard Front Mount PP Cylinder
- 2- HA5430 Hydraulic Oil (1 Liter)

Code: MM TFX HK6500Y

SEASTAR YAMAHA TILT STEERING KIT (CLASSIC) HK6500YTC



The kit contains the following:

- 1- HH6541 SeaStar Tilt Helm, Classic, 1.7
- 1- HC5358 Outboard Front Mount PP Cylinder
- 2- HA5430 Hydraulic Oil (1 Liter)

Code: MM TFX HK6500YTC



BAYSTAR HK4200A HYDRAULIC STEERING KIT



The kit contains the following:

- 1- HH4314 BayStar Helm 1.4 cu" (22.94cc)
- 1- HC4645H* BayStar Compact Cylinder
- 1- HT4420H 20 ft. tubing kit - cut to length
- 2- HA5430 Hydraulic Oil (1 Liter)

*Some engines may require alternative cylinders that require high precision steering.

Code: MM TFX HK4200A



TFXTREME ENGINE CONTROL CABLES



Cross section view



Code		Description
MM TFX CCX189XX*		Mercury Gen II type (4000 series) For (2003 – current) 4000 Mercury Gen II series controls and engines
MM TFX CCX179XX*		Mercury Gen I type (600A series) For 600A Mercury Gen I series controls and engines
MM TFX CCX205XX*		BRP, OMC, Johnson Evinrude (479 series) For (1979 – current) BRP, OMC, and Johnson/Evinrude controls and engines
MM TFX CCX630XX*		Mercury 3600 type For most Mercury controls using 10-32 threaded ends and Mercury engine
MM TFX CCX633XX*		3300CC/33C Universal type (10-32 threaded end) For Yamaha, Honda, Nissan, Suzuki, Tohatsu and other controls and engines with 10-32 threaded connection on both ends
MM TFX CCX430XX*		4300/43BC type (1/4-28 threaded end) 4300/43 type cable with bulkhead and clamp fitting
MM TFX CCX433XX*		4300/43CC type (1/4-28 threaded end) 4300/43 type cable with clamp fittings at both ends
MM TFX CCX640XX*		6400/64BC type (5/16-24 threaded end) 6400/64 type cable with bulkhead and clamp fittings
MM TFX CCX643XX*		6400/64CC type (5/16-24 threaded end) 6400/64 type cable with clamp fittings at both ends

*XX = cable length in feet

ULTRAFLEX

WHEELS

All ULTRAFLEX steering wheels meet the EEC directive 94/25 requirements about pleasure boats. All steering wheels are CE marked in conformity with the EN 28848 – EN 29775 and ABYC P22 safety standards.

- Thermoplastic antishock material
- Standard 3/4" taper
- Hub included



V45 Ø 280 mm (11") Black grip
Code: MM UFX 37920



V45W Ø 280 mm (11") White grip
Code: MM UFX 38049



V45G Ø 280 mm (11") Grey grip
Code: MM UFX 39291



V60B Black grip - Black spokes
Ø 350 mm (13.8")
Code: MM UFX 39189U



V60W White grip -
White spokes - Ø 350 mm (13.8")
Code: MM UFX 39190C



V60G Grey grip - Grey spokes
Ø 350 mm (13.8")
Code: MM UFX 39274J



V60 brc Black grip - Black spokes
Burl wood cap - Ø 350 mm (13.8")
Code: MM UFX 39289Y



V61BR Burl wood grip
Black spokes - Ø 350 mm (13.8")
Code: MM UFX 39191E



NISIDA B/B Black grip
Black spokes - Ø 350 mm (13.8")
Code: MM UFX 61812M



NISIDA B/S Black grip - Silver spokes
Ø 350 mm (13.8")
Code: MM UFX 61813P



SANTORINI B/S Silver inserts
Silver spokes - Ø 350 mm (13.8")
Code: MM UFX 39191E



SPARGI S/S Silver painted inserts
Silver spokes - Ø 350 mm (13.8")
Code: MM UFX 61984U



PALMARIA B/B Black grip
Black spokes - Ø 350 mm (13.8")
Code: MM UFX 663727H



LAVEZZI B/S Black grip
Silver spokes - Ø 360 mm (14.1")
Code: MM UFX 65259R

PROPELLERS

When Ordering Specify: - Engine Brand
- Engine HP
- Material (Aluminium or Stainless Steel)
- Blades (3 or 4)

AMITA 3



- Traditional Rubber hub
- Three blade aluminum propeller
- Exclusive Solas squeeze casting process
- Wide blade design specifically for 4-stroke engines
- Outstanding acceleration and top speed

Code: MM SOL AMT3

AMITA 4



- Traditional Rubber hub
- Four blade aluminum propeller
- Exclusive Solas squeeze casting process
- Wide blade design specifically for 4-stroke engines
- Increased static thrust for heavy loads & maneuverability
- Great stern lift and mid-range performance

Code: MM SOL AMT4

SATURN



- General Purpose Propeller
- Traditional Rubber hub
 - Three-blade stainless steel propeller
 - All-around general purpose performance
 - A more durable replacement for aluminum propeller with better efficiency

Code: MM SOL SAT

NEW SATURN



- All-around Performance Propeller
- Traditional Rubber hub
 - Three-blade stainless steel propeller
 - Offers good acceleration & all-around performance
 - Smaller pitch sizes offered in extra large diameter with increased blade area
 - Large ear design is ideal for pontoons, commercial hulls, and heavy loads

Code: MM SOL NSAT

TITAN



- High Power Applications
- Traditional Rubber hub
 - Three-blade stainless steel propeller
 - High camber blade and large blade area design
 - Great load carrying capability
 - Excellent fuel economy

Code: MM SOL TIT

HR TITAN 3



- High Speed Application
- Traditional Rubber hub
 - Three-blade stainless steel propeller
 - Performance prop for high speed planning hulls
 - High rake blade design provides excellent bow lift and acceleration
 - Heavy cup design increases bite and reduces slip

Code: MM SOL HRT3

SOLAS PROPELLERS IN COMPLIANCE WITH GENUINE PRODUCTS

HR TITAN 4

- Excellent Cruising Performance
- Traditional Rubber hub
 - Four blade stainless steel propeller
 - Provides great stern lift and acceleration
 - High rake blade with large cupping design
 - Delivers powerful thrust and very smooth performance
 - Increased speed and fuel economy in the engine's mid-range
 - Excellent cruising performance

Code: MM SOL HRT4

SCORPION

- Ultimate Performance
- Traditional Rubber hub
 - Three blade stainless steel propeller
 - High performance for bass and bay boats
 - High rake design for increased bow lift
 - Extra cupping for great bite in high engine mount positions
 - Cut down blade design reduces drag
 - Incorporates tuned exhaust relief for improved acceleration

Code: MM SOL SCO

LEXOR

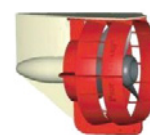
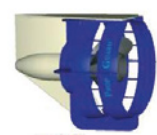
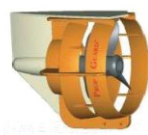
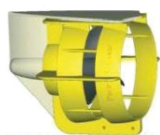
- All-around Performance
- Traditional Rubber hub
 - Three blade stainless steel propeller
 - Large diameter and blade area for big boat loads
 - Great high speed performance without sacrificing mid-range speeds
 - Excellent fuel economy for offshore boats

Code: MM SOL LEX

SUITABLE FOR ENGINES:**PROPELLER PULLER - SHAFT LINES**

Suitable for 2 to 5 blade propellers.
Made of high-resistance steel.

Code	Description
MM OSC 5296201	For shaft lines mm 25 to mm 38 (1" - 1 1/2")
MM OSC 5296202	For shaft lines mm 40 to mm 52 (1 5/8- 2")

PROP GUARD

Code	Propeller Size	Suitable for	Cavitation plate propshaft to	Colour
MM PRG 9YELLOW	9"	9 - 20 HP Outboards	110-140mm	Yellow
MM PRG 11ORANGE	11"	20 - 35 HP Outboards	145-154mm	Orange
MM PRG 13BLUE	13"	40 - 55 HP 2 Stroke and 40 - 60 HP 4 Stroke Outboards	155-165mm	Blue
MM PRG 14RED	14"	60 - 135 HP 2 Stroke and 70 -130 HP 4 Stroke Outboards	166-190mm	Red

**PROPSPEED KIT**

Available as
1 liter, 1/2 liter and 200ml Kit

Code: MM PRP KIT

4:1 METAL ETCHING PRIMER & CATALYS








Code: MM PRP COMBO

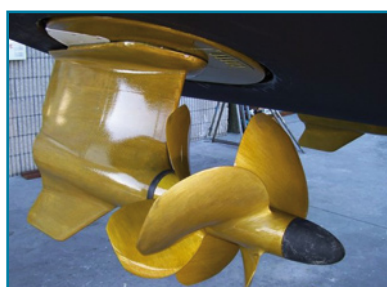
PROPSPEED CLEARCOAT

Code: MM PRP COAT

HOW MUCH PROPSPEED DO I NEED?

To determine how much PropSpeed is needed for your application use the chart below. Once you know the size of the propeller(s), the number of blades, and running gear components to coat, select the appropriate kit.

Running Gear Components	Propeller Size and Number of Blades		
	18" - 24" 	24" - 36" 	36" - 48" 
	200 ml Kit	500 ml Kit	500 ml Kit
	200 ml Kit	500 ml Kit	1000 ml Kit
 x2 x2	500 ml Kit	500 ml Kit	1000 ml Kit
 x2 x2 x2	500 ml Kit	1000 ml Kit	1000 ml Kit

Correct Propspeed Application

STABILIZERS



STABILIZER



Zero Speed Fins with Hull Unit

Code	Fin Size Range	Vessel Length
MM QTM QC1000	1.6-2.0m ² (17.2-21.5ft ²)	24-30m (80-100ft)
MM QTM QC1200	1.2-2.7m ² (13.0-29.0ft ²)	30-45m (100-150ft)
MM QTM QC1500	1.5-3.5m ² (16-38ft ²)	36-50m (118-165ft)
MM QTM QC1800	2.7-5.0m ² (29.0-53.8ft ²)	45-60m (148-197ft)
MM QTM QC2200	3.8-7.4m ² (40.9-79.7ft ²)	55-65m (180-213ft)
MM QTM QC2600	8.0-11.0m ² (86-118ft ²)	60-90m (197-295ft)
MM QTM QC3600	13.0-16.0m ² (139.9-172.2ft ²)	90-145m (295-475ft)

Extendable Fins with Hull Unit

Code	Fin Size Range	Vessel Length
MM QTM QC1200XT	1.2-1.6m ² (13.0-17.0ft ²)	30-50m (100-170ft)
MM QTM QC1500XT	3.4-4.4m ² (34-47ft ²)	40-55m (130-180ft)
MM QTM QC1800XT	3.4-5.2m ² (37-56ft ²)	50-70m (164-230ft)
MM QTM QC2200XT	5.1-9.0m ² (55-97ft ²)	65-80m (200-250ft)
MM QTM QC2600XT	8.8-11.0m ² (95-119ft ²)	75-100m (250-330ft)
MM QTM QC3600XT	11.5-15.0m ² (124-162ft ²)	100-140m (330-460ft)

For each Zero Speed™ stabilizer system, Quantum has designed a range of quiet and reliable hydraulic power solutions.

UPGRADE TO ZERO SPEED

Engineering Consulting Onboard
 Drawings/Manuals Supply
 Shipyard Planning/Assistance
 Pre-Sale & After-Sales Authorised Service